



ASKING PRICE

£450,000

Lyndhurst Way

London, SE15 4PT

**GARETH
JAMES**

PROPERTY SUMMARY

Chain free - Lovely one bedroom ground floor flat with private garden.

1



1

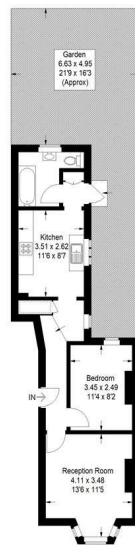


1





Lyndhurst Way, SE15
 Approximate Gross Internal Area
 45.3 sq m / 488 sq ft



Ground Floor

□ Reduced headroom below 1.5 m / 5'0"

This plan is for layout guidance only. Not drawn to scale unless stated. Windows and door openings are approximate. While every care is taken in the preparation of this plan, please check all dimensions, shapes and compass bearings before making any decisions reliant upon them. (D1305251)

1 |

1 |

1 |

Energy Efficiency Rating		
	Current	Potential
Very energy efficient - lower running costs		
(92 plus) A		
(81-91) B		
(69-80) C		75
(55-68) D	63	
(39-54) E		
(21-38) F		
(1-20) G		
Not energy efficient - higher running costs		
England & Wales	EU Directive 2002/91/EC	

Agents Note: Whilst every care has been taken to prepare these particulars, they are for guidance purposes only. All measurements are approximate and are for general guidance purposes only and whilst every care has been taken to ensure their accuracy, they should not be relied upon and potential buyers/tenants are advised to recheck the measurements

GARETH
JAMES

OFFICE ADDRESS
 129 Bellenden Road
 London
 SE15 4QY

OFFICE DETAILS
 02077324330
 sales@garethjames.com
<https://www.garethjames.com/>